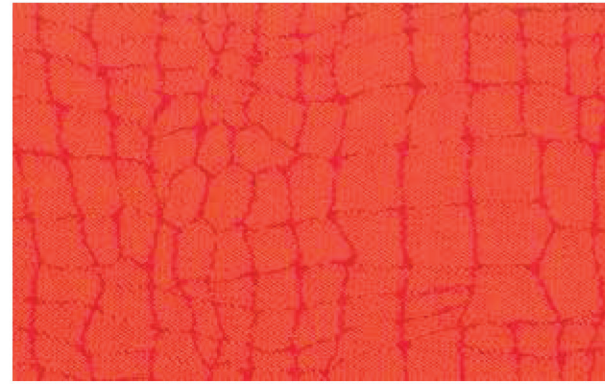
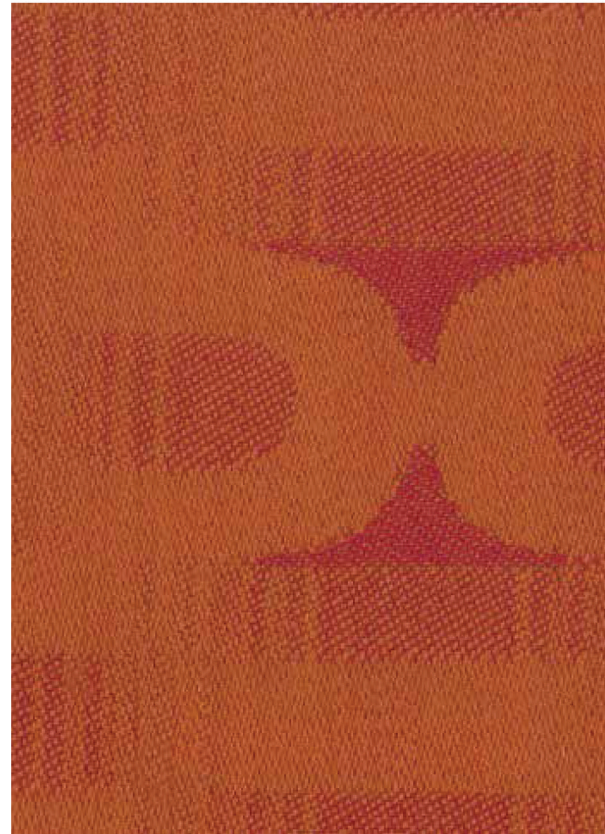


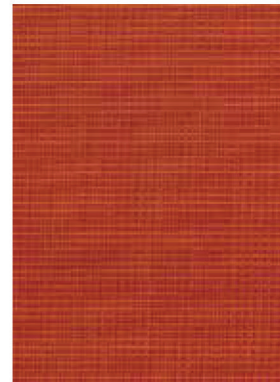
Desert, Eco Zorb, Freeway & Go-Go.



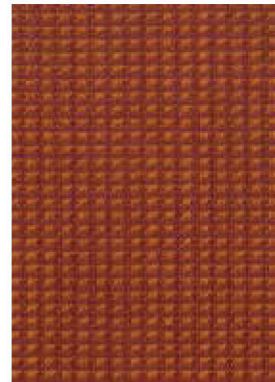
Desert - Dawn



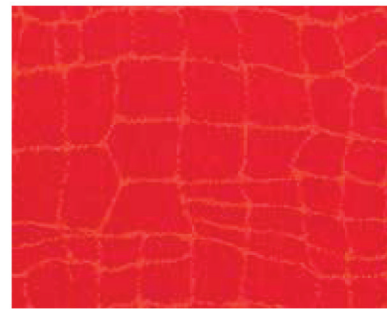
Go-Go - Psycho



Eco Zorb - Jasper



Freeway - Cone



Desert - Dusk



Desert - Heatwave



Desert - Scorch



Freeway - Stop



Go-Go - Fever



Eco Zorb - Garnet



Desert - Sun



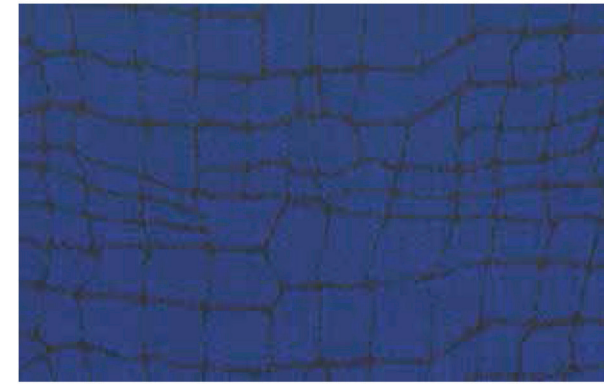
Desert - Sand



Go-Go - Fluro



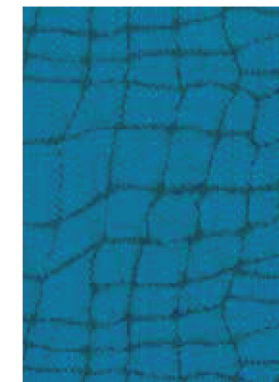
Go-Go - Electric



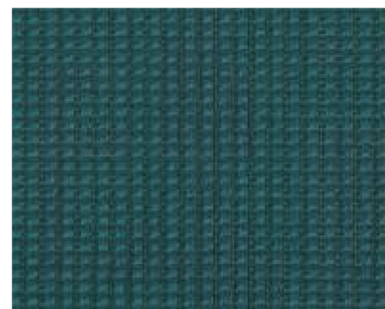
Desert - Water



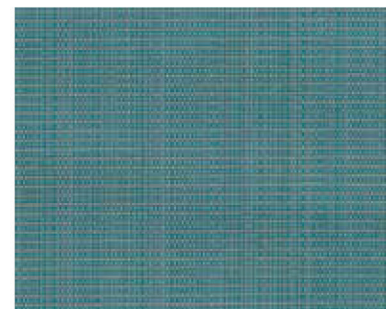
Desert - Lagoon



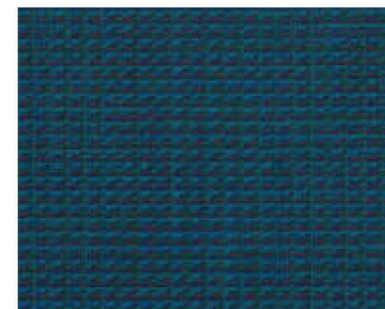
Desert - Mirage



Freeway - Puddle



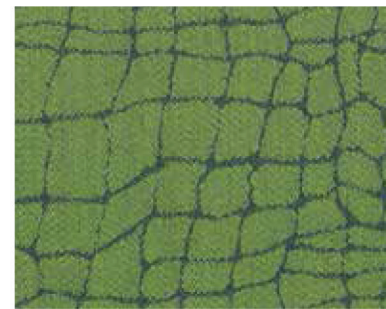
Eco Zorb - Turquoise



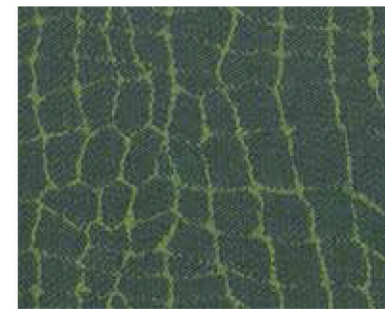
Freeway - Glass



Go-Go - Commune



Desert - Grass



Desert - Field



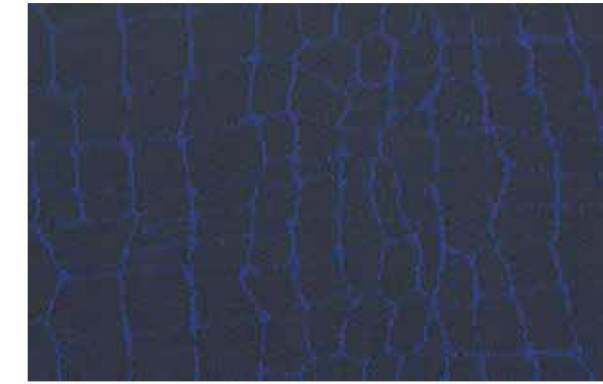
Freeway - Go



Eco Zorb - Peridot



Freeway - Verge



Desert - Sky



Go-Go - Cool Man



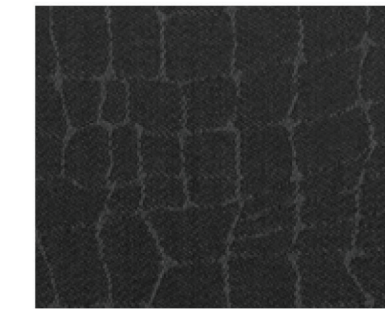
Go-Go - Dreamer



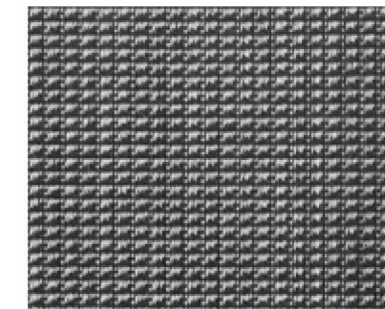
Eco Zorb - Sapphire



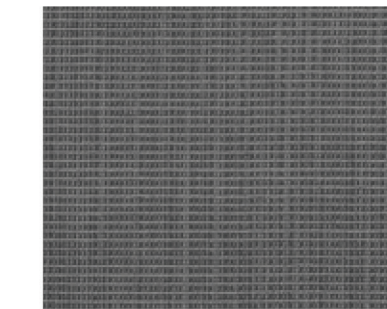
Eco Zorb - Granite



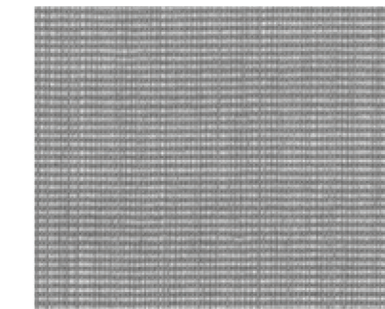
Desert - Crevasse



Freeway - Zebra



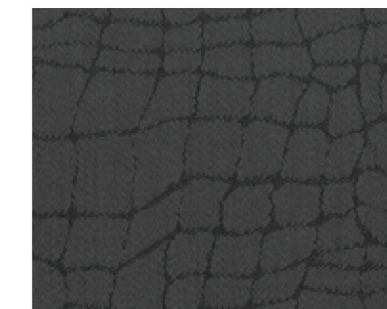
Eco Zorb - Fossil



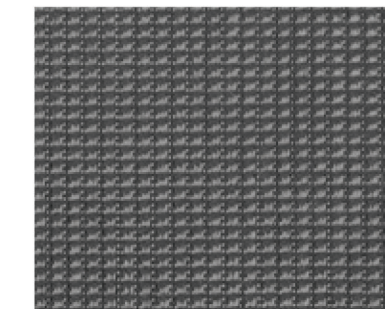
Eco Zorb - Moonstone



Go-Go - Hypno



Desert - Nightfall



Freeway - Asphalt

Desert

Width	140cm
Composition	50% Wool, 42% Polyester, 8% Nylon
Roll size	60m approx
Weight	390g per lineal metre
Use	Heavy Duty Commercial Upholstery
Abrasion	75,500 Martindale Rubs
Fire Test	AS1530 Part 3

Eco Zorb

Width	137cm
Composition	95% Eco Wool, 5% Nylon (ECNZ)
Roll size	50m approx
Weight	634g per lineal metre
Use	Heavy Duty Commercial Upholstery
Abrasion	79,000 Martindale Rubs
Fire Test	AS1530 Part 3

Freeway

Width	137cm
Composition	65% Wool, 4% Nylon, 31% Polyester
Roll size	65m approx
Weight	520g per lineal metre
Use	Heavy Duty Commercial Upholstery
Abrasion	50,000 Martindale Rubs
Fire Test	AS1530 Part 3

Go-Go

Width	137cm
Repeat	13.8cm H, 7.2cm V
Composition	50% Wool, 42% Polyester, 8% Nylon
Roll Size	60m approx
Weight	390.5g per lineal metre
Use	Heavy Duty Commercial Upholstery
Abrasion	56,000 Martindale Rubs
Fire Test	AS1530 Part 3

Colour Variations: All textiles are subject to some colour variation. Fabric supplied to customer order will be within commercial tolerance.

CTA Performance Rating: Tests conducted by independent testing laboratories indicate that DESERT, ECO ZORB, FREEWAY & GO-GO met or exceeded the performance guidelines for Heavy Duty Commercial Use as determined by the CTA (Commercial Textile Association of Australia and New Zealand).

Fabric Care: Do not remove any part for separate cleaning. Protect from direct sunlight. Vacuum regularly using low suction. Rotate reversible cushions regularly. Professional cleaning recommended.

Tel: 1800 173 209 / Fax: 1800 723 264 / Email: sales@atworkwithcamira.com / Web: atworkwithcamira.com /
*at work is a brand of Textilia



Commercial Textile Association
of Australia & New Zealand Limited.



Commercial Textile Association
Performance Rating.



The Campaign for Wool.



Eco Logical.